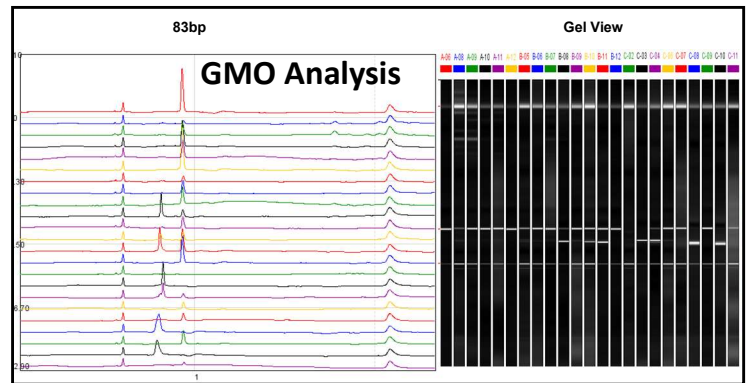
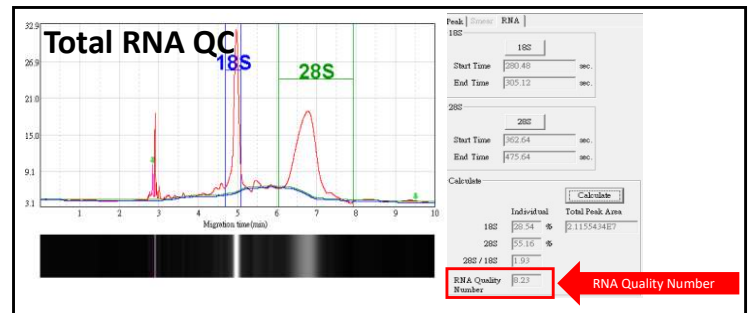
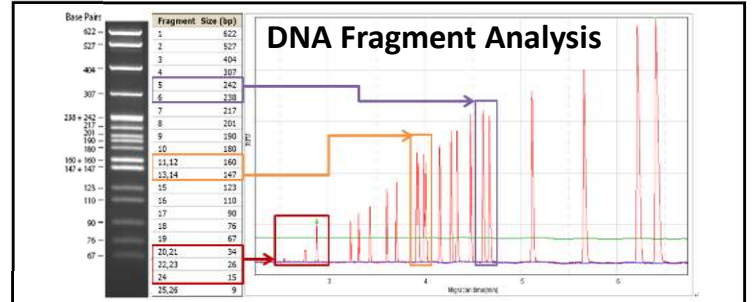
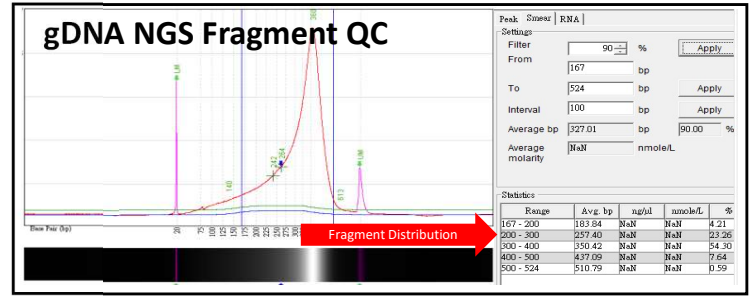
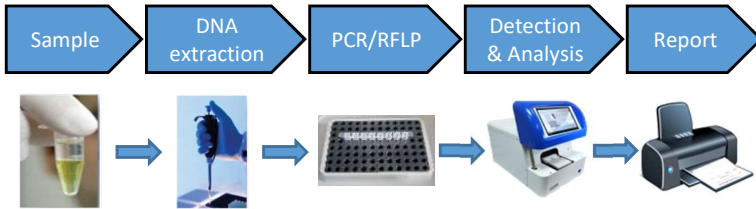


Qsep400

High-throughput (4-Channel) CGE System



System Highlights:

- **Automated 4 samples process / run**
(High-throughput workflow)
- **Disposable Gel-Cartridge**
No need for gel preparation
100-300 samples run
- **Rapid Analysis**
2-7 minutes per run (1.5 hour per 96-well plate)
- **Sensitivity**
Detects as low as 0.1 ng/ul
(2pg/ul: Diluted in DD water)
- **Resolution**
1-4 bp (Range of 100-500 bp)
- **Minimum Sample Volume**
Sample volume 1ul (Standard 20ul)

Applications:

- NGS Sample QC & Genomic DNA
- Genetic Profiling
- Restriction Fragment Length Polymorphism (RFLP)
- PCR Product check (PCR Optimization)
- DNA Primer QC
- HLA Typing
- STR DNA analysis
- Plasmid Purification & Vector Cloning Analysis
- Total RNA QC
- Synthesized Oligonucleotides
- DNA Hybridization
- DNA/ Protein Interaction

Specification

Detection	Fluorescence
Light Source	LED
Separation Voltage	1~15 KV
Connection	USB
Power Source	AC 100-240V
Maximum Power	60W
System Weight	26 kg
Dimension	54 x 40 x 36cm

BiOptic Inc.

Address: (23141) 4F, No.108-3, Minquan Rd., Xindian District, New Taipei City, Taiwan (R.O.C.)
Tel: +886-2-2218-8726, Fax: +886-2-2218-8727, E-mail: info@bioptic.com.tw (www.bioptic.com.tw)